

Connecting Devices to the PSD-BYOD Network

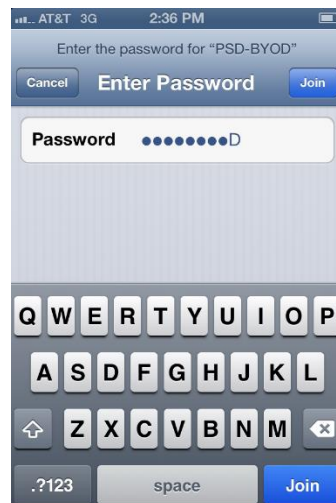
Students and staff can use the PSD-BYOD (Bring Your Own Device) network for internet access. Below are directions for connecting different types of devices.

Selecting a Network

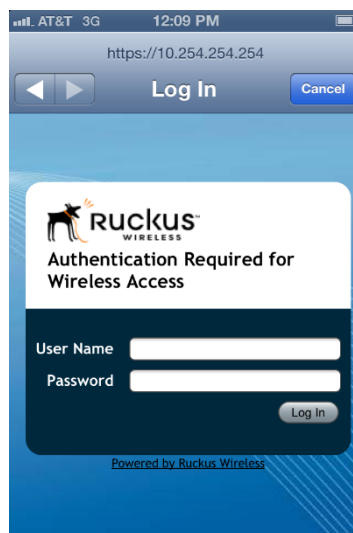
1. **PSD-BYOD:** The “Bring Your Own Device” network is for all students with a network login and password. Students must have a signed acceptance of computer use on file (part of the registration packet)

iPhones and iPads

1. Choose **Settings**.
2. Choose **Wi-Fi** (make sure it is set to ON).
3. Choose **PSD-BYOD**.
4. Enter the WiFi Password – **ProsserSD**



5. The next screen displays PSD Ruckus Login
Enter your username and password into that screen.
(For example – 15smithj)



Once you hit Login, you could be directed to a white page that lets you know you were successful.

Mac Laptops

1. Click on the **Wireless** icon at the top right corner of the screen. →
2. Make sure “Turn AirPort On” is selected (Should say “Turn AirPort Off”).
3. Choose **TISD-BYOD**.
4. At the **Verify Certificate** screen, Click **Continue**.



5. 802.1X Authentication:
 - a. User name: student ID or firstname.lastname (staff)
 - b. Password: computer login password
 - c. If you checkmark the box next to “Only use this password once”, you will be prompted to login in each time you select the TISD-BYOD wireless network.

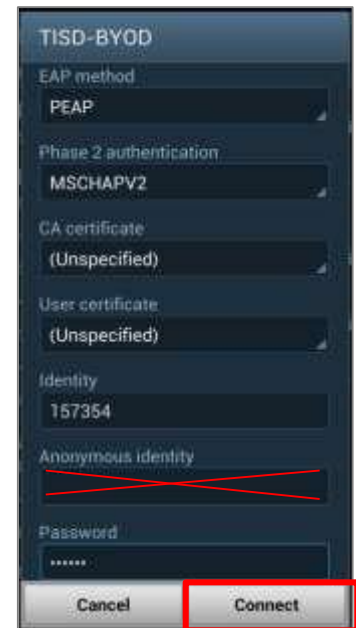


Windows 7 Laptops

1. Choose **Settings**.
2. Choose **Wireless & Networks**.
3. Choose **Wi-Fi Settings** (make sure it is turned on.)
4. Choose **PSD-BYOD**.
5. Accept the default settings at the top of the screen.

| | | |
|------------------|---|-------------|
| EAP method | → | PEAP |
| Phase 2 auth... | → | MSCHAPV2 |
| CA certificate | → | Unspecified |
| User certificate | → | Unspecified |

6. Under **Identity**, type in your user name.
 - Student ID for students
 - firstname.lastname for staff
7. Leave **Anonymous identity** blank.
8. Under **Password**, type in your password.
9. Click **Connect**.





Nooks

1. Press the **Nook Button**.
2. Choose **Settings**
3. Choose **Wireless**.
4. Choose **PSD-BYOD**.
5. In the **Login** box, type in your user name (15smithj)
6. In the **Wireless Password** box, type in your computer login password.



Kindle Paperwhites


1. From **Home**,  select the **Menu**  button.
2. Select **Settings** from the drop-down menu.
3. Select **Wi-Fi Networks**.
4. Choose **PSD-BYOD**.
5. Accept the default settings at the top of the screen

| | | |
|------------------|---|-------------|
| EAP method | → | PEAP |
| Phase 2 | → | MSCHAPV2 |
| CA Certificate | → | Unspecified |
| User Certificate | → | Unspecified |

6. Under **Identity**, type in your user name (student ID or firstname.lastname).
7. Under **Password**, type in your password.
8. Click Connect.



Kindle Fires

1. Choose the **Settings** icon  from the top right of the home screen.
2. Choose **Wi-Fi**.
3. Choose **PSD-BYOD**.
4. Leave the settings at the top of the screen (EAP, Phase 2, CA Certificate, and User Certificate as they are)
5. Under **Identity**, type in your user name (student ID or firstname.lastname).
6. Under **Password**, type in your password.
7. Click Connect.



Windows 8 PC's and Tablets

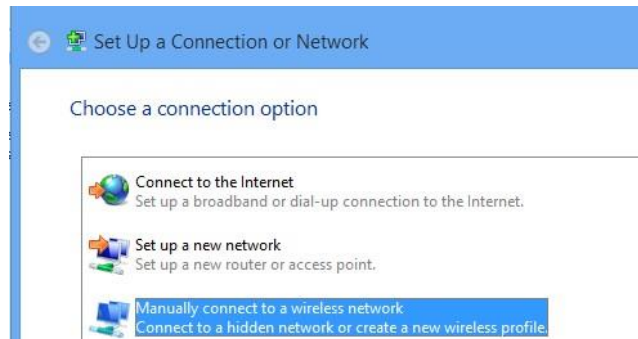
1. Search for "Control Panel" and open.
2. Choose "View Network Status and Tasks."



3. Choose "Set up a new connection or network"

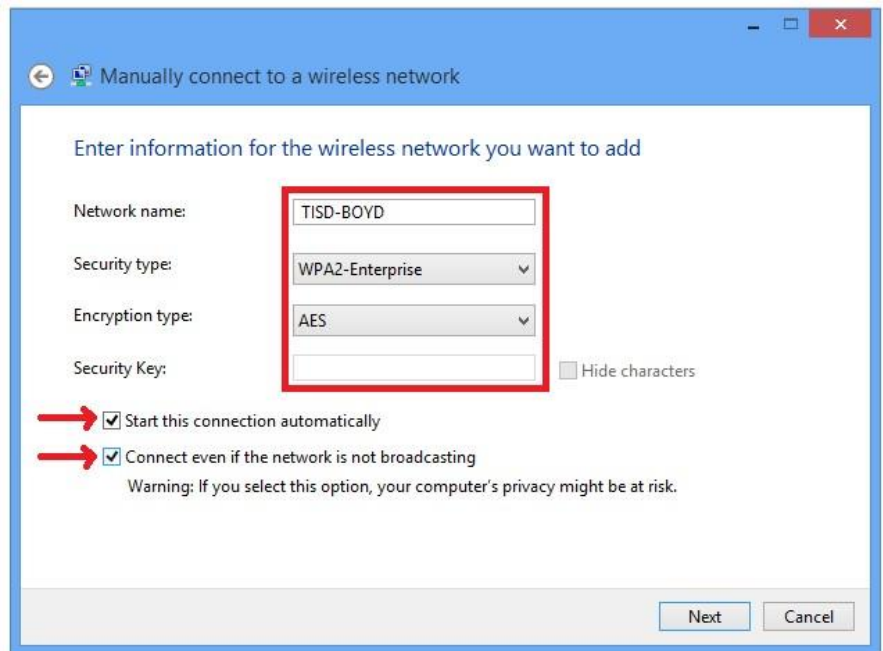


4. Choose "Manually connect to a wireless network" then select **Next**.



5. Enter or select the wireless settings listed below.

- a. Network name: **PSD-BYOD**
- b. Security Type: **WPA2-Enterprise**
- c. Encryption Type: **AES**
- d. Security Key: leave blank
- e. Check both boxes at the bottom
 - Start this connection automatically
 - Connect even if the network is not broadcasting

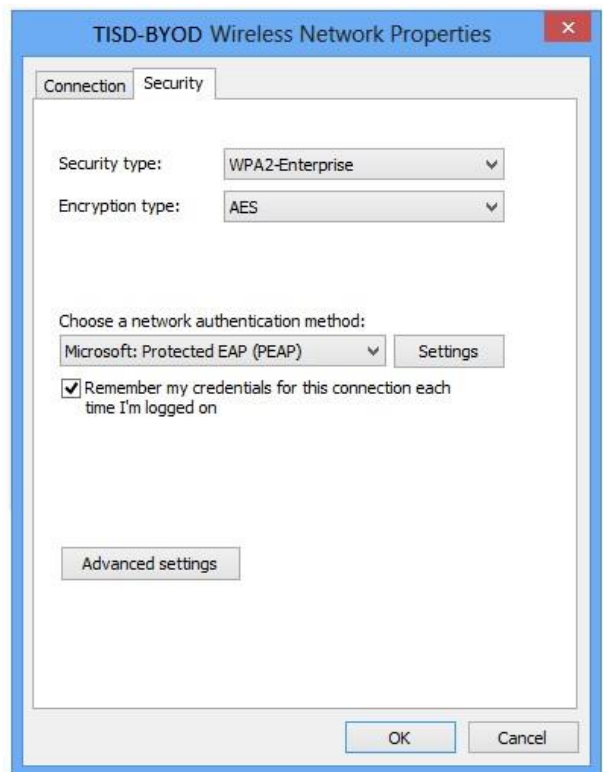


11. Click **Next**.

12. Click "Change Connection Settings" on the next screen.

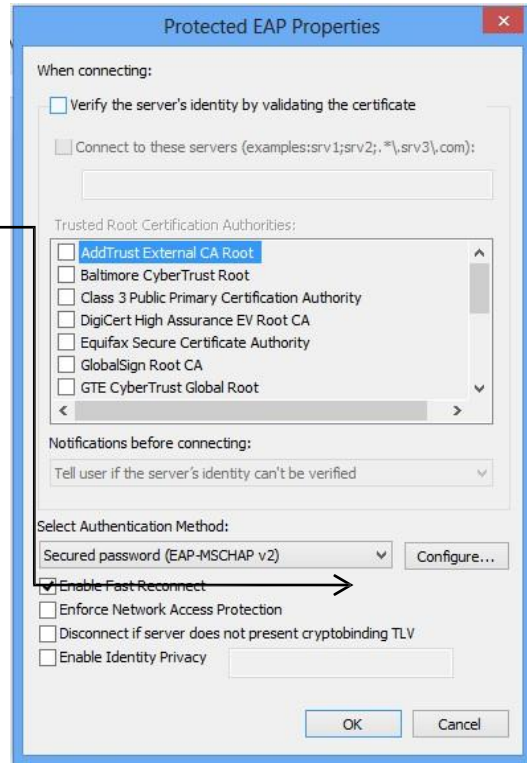
13. Click the Security Tab and choose the settings below.

- f. Security Type: **WPA2-Enterprise**
- g. Encryption Type: **AES**
- h. Choose a network authentication method:
Microsoft: Protected EAP (PEAP)
- i. Checkmark the box next to "Remember my credentials for this connection each time I'm logged in."
- j. Click **Settings**.



k. After clicking **Settings**, remove the checkmark from the box next to "Verify the server's identity by validating."

- Click the **Configure** button.
- Remove the checkmark from the box "Automatically use my Windows logon name and password (and domain if any)."



- Click **OK**.
- Click **OK** again.

14. While still under the Security Tab, select the **Advanced settings** button then checkmark the box "Specify authentication mode."

15. Choose "User or computer authentication."

16. Click **OK** and **OK** again.

17. Close all windows and go into Networks.

18. Select TISD-BYOD.

19. Leave selected "Connect automatically" and choose "Connect".

20. Provide logon credentials (same as computer username and password).

